

# **STEVENS MARINE 2025**

**BOATS, MOTORS & MORE**



**ALUMAWELD KINGFISHER SMOKER CRAFT  
STARWELD SUNCHASER STARCRAFT**





Stevens Marine has earned a reputation for excellence because of our customer service. Our associates spend their free time doing what you do, boating. We know that life is better when you're boating, whether you're trolling for salmon, crabbing or spending time with the family. That's why Stevens Marine is one of the top boat dealers in the country.



## MEET THE TEAM



59 YEARS  
**PAGE STEVENS**  
FOUNDER  
CEO



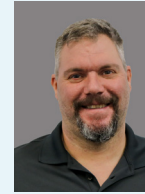
26 YEARS  
**ERIC STEVENS**  
PRESIDENT



37 YEARS  
**ERIC PEDERSEN**  
STORE MANAGER  
TIGARD



39 YEARS  
**CHRIS BURGI**  
STORE MANAGER  
MILWAUKIE



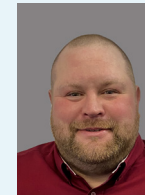
27 YEARS  
**MIKE DENNIS**  
SERVICE MANAGER  
TIGARD



27 YEARS  
**TIM MILLER**  
SERVICE MANAGER  
MILWAUKIE

TIGARD - WEST LOCATION

MILWAUKIE - EAST LOCATION



**TRENT VANZANT**  
SALES ASSOCIATE  
TIGARD



**CRAIG MOSTUL**  
SALES ASSOCIATE  
MILWAUKIE



**NELSON JUTILA**  
SALES ASSOCIATE  
TIGARD



**MIKE GEERTSEN**  
SALES ASSOCIATE  
MILWAUKIE



**DEREK CARVER**  
SALES ASSOCIATE  
TIGARD



**CHRISTIAN RUSCITTI**  
SALES ASSOCIATE  
MILWAUKIE



**WAYNE BARTLETT**  
SALES ASSOCIATE  
TIGARD



**MICHAEL GUESS**  
SALES ASSOCIATE  
MILWAUKIE



# ALUMAWELD

Since 1971, Alumaweld's level of innovation and sophisticated engineering have set the standard for heavy gauge welded aluminum boats. We are committed to providing you with a consistent and comfortable boating experience. Built with exclusive extrusions and bottom strakes, Alumaweld boats offer exceptional strength and nimble handling. Designed by talented engineers, each detail, down to the tackle tray width, is carefully crafted for an unmatched fishing experience. Experience the unparalleled performance and strength of Alumaweld's all-season boats.

Designed in White City, Oregon and available nationwide, each model promises unmatched quality and performance. Find your nearest dealer to experience the difference yourself!



## SIGNATURE FEATURES

- NEW Aluma-Coat Interior
- Full Side Paint
- Under Floor Protective Epoxy Coating
- Rogue Galvanized Trailer
- Exclusive Lifetime Hull Warranty
- Extruded Lifting & Turning Strakes
- Exclusive Extrusions
- Continuous Welds Throughout
- Enhanced Sidewall Design
- Full Length Box Girders



# FREE DRIFTER



Starting at  
**\$355**  
 Per Month OAC

Boat	Price	Mercury
18'	<b>\$39,799</b>	60 CT EFI
20'	<b>\$41,995</b>	60 CT EFI
Jet		
18'	<b>\$43,220</b>	90/65 Jet EFI
20'	<b>\$46,889</b>	115/80 Jet EFI

### STANDARD FEATURES

- (2) Comfort Seats on Storage Boxes
- Full Coaming Gunnel w/Gunnel Rubber
- Tiller or Center Console Steering
- Double Door Extended Step Deck
- Built-In Fish Box
- Locking Foredeck Storage
- Dual Depth Finder Boxes
- Extra Wide Tackle Trays
- Locking Rear Storage
- Washdown System
- Hot Water Sink
- Swim Platform (18')
- Anchor Nest (18')
- Rogue Trailer w/Swing Tongue



Model Specs	Length	Beam	Beam at Chine	Inside Freeboard	Side Height	Transom Height	Deadrise	Bottom Thickness	Side Thickness	Persons/Capacity	Approx. Weight	Weight Capacity	Fuel Capacity	Max HP Prop/Jet
18'	20' 1"	84"	66"	24"	28"	26"	6° w/shoe	0.160	0.125	5/750 lbs	1,240 lbs	1,500 lbs	37 Gal	115/80 HP
20'	20' 1"	84"	66"	24"	28"	26"	6° w/shoe	0.160	0.125	5/750 lbs	1,270 lbs	1,500 lbs	37 Gal	115/80 HP



Starting at  
**\$409**  
 Per Month OAC

# ADVENTURER

Boat	Price	Mercury
18'	\$46,100	90 CT EFI
20'	\$48,585	90 CT EFI
22'	\$55,580	115 CT EFI
Jet		
18'	\$47,659	90/80 Jet EFI
20'	\$50,070	115/80 Jet EFI
22'	\$60,030	150/105 Jet EFI



## STANDARD FEATURES

- (2) Comfort Seats on Storage Boxes
- Full Coaming Gunnel w/ Gunnel Rubber
- Tiller or Center Console Steering
- Double Door Extended Step Deck
- Built-In Fish Box
- Dual Depth Finder Boxes
- Locking Rear Storage
- Hot Water Sink
- Washdown Pump
- Locking Rear Storage
- Swim Platform (18')
- Anchor Nest (18')
- Rogue Trailer



Model Specs	Length	Beam	Beam at Chine	Inside Freeboard	Side Height	Transom Height	Deadrise	Bottom Thickness	Side Thickness	Persons/Capacity	Approx. Weight	Weight Capacity	Fuel Capacity	Max HP Prop/Jet (Remote/Tiller)
18'	20' 1"	88.5"	72"	30"	32"	25"	14°	0.160	0.125	5/750 lbs	1,240 lbs	1,500 lbs	38 Gal	115/80 HP
20'	20' 1"	88.5"	72"	30"	32"	25"	14°	0.160	0.125	5/750 lbs	1,280 lbs	1,500 lbs	38 Gal	115/105 HP
22'	22' 1"	88.5"	72"	30"	32"	25"	14°	0.190	0.125	5/750 lbs	1,400 lbs	1,500 lbs	38 Gal	150/105 HP



# SUPER VEE & SUPER VEE PRO



Starting at  
**\$449**  
 Per Month OAC

Boat	Price	Mercury
20' SV	\$50,550	90 CT EFI
21' SVP	\$60,545	115 CT EFI
23' SVP	\$68,860	150 EFI
25' SVP	\$72,300	150 EFI
<b>Jet</b>		
20' SV	\$55,715	150/105 Jet EFI
21' SVP	\$65,849	150/105 Jet EFI
23' SVP	\$68,550	150/105 Jet EFI
25' SVP	\$78,240	200/140 Jet EFI

## STANDARD FEATURES

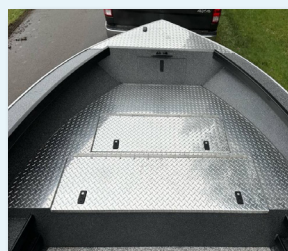
- Full Coaming Gunnel w/Gunnel Rubber
- Tiller or Center Console Steering
- Built-In Fish Box
- Locking Foredeck Storage
- Washdown Pump
- Lockable Rear Transom
- Rogue Trailer (T/A on 21' - 25' only)

## 20' Super Vee Standard Features

- (2) Comfort Seats on Storage Boxes
- Extended Step Deck w/Fish Box & Dry Storage

## 21'-25' Super Vee Pro Standard Features

- (4) Comfort Seats on Adjustable Storage Boxes
- Extended Step Deck w/ Dry Storage
- Swing Away Tongue (21' only)
- Pro Transom w/Locking Storage



Model Specs	Length	Beam	Beam at Chine	Inside Freeboard	Side Height	Transom Height	Deadrise	Bottom Thickness	Side Thickness	Persons/Capacity	Approx. Weight	Weight Capacity	Fuel Capacity	Max HP Prop/Jet
20' Super Vee	20' 3"	93.5"	72"	26"	30"	20"	6°	0.190	0.125	6/900 lbs	1,395 lbs	1,700 lbs	35 Gal	115/105 HP
21' S. Vee Pro	21' 5"	98"	82"	30"	30.5"	25"	6°/10°	0.190	0.125	7/1,050 lbs	1,620 lbs	1,850 lbs	37/45 Gal	250/175 HP
23' S. Vee Pro	23' 5"	98"	82"	30"	30.5"	25"	6°/10°	0.190	0.125	9/1,350 lbs	1,780 lb	2,120 lbs	37/45 Gal	250/175 HP
25' S. Vee Pro	25' 5"	98"	82"	30"	30.5"	25"	10°	0.190	0.160	9/1,350 lbs	2,150 lbs	2,120 lbs	45 Gal	250/175 HP



Starting at  
**\$570**  
 Per Month OAC

Boat	Price	Mercury
21'	<b>\$73,090</b>	150 EFI
23'	<b>\$75,449</b>	150 EFI
25'	<b>\$78,949</b>	150 EFI
Jet		
21'	<b>\$72,400</b>	150/105 Jet EFI
23'	<b>\$75,125</b>	150/105 Jet EFI
25'	<b>\$84,900</b>	200/140 Jet EFI

**STANDARD FEATURES**

- (4) Comfort Seats on Adjustable Storage Boxes
- Full Coaming Gunnel w/Gunnel Rubber
- Tiller or Center Console Steering
- Electronic Storage Boxes
- Pro Transom w/ Locking Storage
- Locking Foredeck Storage
- Extended (3) Compartment Step Deck
- Built-In Fish Box
- Hot Water Sink
- Washdown System
- Electric Bilge Pump w/Auto Float Switch
- Rogue Trailer w/ Tandem Axle & Disc Brakes on Both Axles



**COLUMBIA**



Model Specs	Length	Beam	Beam at Chine	Inside Freeboard	Side Height	Transom Height	Deadrise	Bottom Thickness	Side Thickness	Persons/Capacity	Approx. Weight	Weight Capacity	Fuel Capacity	Max HP Prop/Jet (Remote/Tiller)
21'	21' 5"	101"	82"	29"	33"	31"	14°	0.190	0.125	7/1,050 lbs	1,925 lbs	1,850 lbs	45 Gal	250/175 HP
23'	23' 5"	101"	82"	29"	33"	31"	14°	0.190	0.125	9/1,350 lbs	2,050 lbs	2,120 lbs	60 Gal	250/175 HP
25'	25' 5"	101"	82"	29"	33"	31"	14°	0.250	0.160	9/1,350 lbs	2,250 lbs	2,120 lbs	60 Gal	250/175 HP



# PACIFIC CC & XD



Starting at  
**\$579**  
 Per Month OAC

Boat	Price	Mercury
22' CC	\$73,895	150 EFI
24' CC	\$79,000	150 EFI
26' CC	\$82,520	150 EFI
24' XD	\$88,820	150 EFI
26' XD	\$93,020	150 EFI

## STANDARD FEATURES

- (4) Comfort Seats on Storage Boxes
- Full Coaming Gunnel w/ Gunnel Rubber
- Center Console Steering
- Built-In Fish Box
- Locking Foredeck Storage
- Washdown Pump
- Lockable Rear Transom Box
- Lifting/Turning Strakes
- Extended Step Deck w/ Dry Storage - 3 Compartments
- Welded on Zinc Anode
- Rogue Trailer w/ Tandem Axle & Disc Brakes on Both Axles



Model Specs	Length	Beam	Beam at Chine	Inside Freeboard	Side Height	Transom Height	Deadrise	Bottom Thickness	Side Thickness	Persons/Capacity	Approx. Weight	Weight Capacity	Fuel Capacity	Max HP Prop/Jet
22' CC	24' 3"	99.5"	82"	29"	33"	25"	18°	0.190	0.125	8/1,200 lbs	2,200 lbs	1,800 lbs	60 Gal	250 HP
24' CC	26' 3"	99.5"	82"	29"	33"	25"	18°	0.250	0.160	8/1,200 lbs	2,810 lbs	1,800 lbs	80 Gal	400 HP
26' CC	28' 3"	99.5"	82"	29"	33"	25"	18°	0.250	0.160	9/1,350 lbs	2,970 lbs	2,400 lbs	120 Gal	500 HP
24' XD	26' 5"	101"	82"	31"	36"	30"	18°	0.250	0.160	8/1,200 lbs	2,500 lbs	1,800 lbs	80 Gal	400 HP
26' XD	28' 5"	101"	82"	31"	36"	36"	18°	0.250	0.160	9/1,350 lbs	2,800 lbs	2,400 lbs	120 Gal	500 HP



Starting at  
**\$395**  
 Per Month OAC

# TALON

Boat	Price	Mercury
18'	<b>\$44,369</b>	60 CT EFI

### STANDARD FEATURES

- (2) Comfort Seats on Storage Boxes
- Full Coaming Gunnel
- Top, Side Curtains, Back Drop & Boot
- Electric Bilge Pump
- Deluxe Dash Panel w/ 5 Switches
- Dual USB Port & 12-Volt Outlet
- Locking Foredeck Storage
- Lower Walk-Thru Door
- Washdown Pump
- Bow Fish Box & Storage
- Anchor Nest
- Swim Step
- Welded on Zinc Anode
- Welded on Bow Roller
- Rogue Trailer w/ Tandem Axle & Disc Brakes on Both Axles



Model Specs	Length	Beam	Beam at Chine	Inside Freeboard	Side Height	Transom Height	Deadrise	Bottom Thickness	Side Thickness	Persons/ Capacity	Approx. Weight	Weight Capacity	Fuel Capacity	Max HP Prop/Jet
18'	20' 1"	89"	72"	27.5"	29"	25"	14°	0.160	0.125	5/750 lbs	1,350 lbs	1,500 lbs	38 Gal	115/80 HP



# STRYKER SPORT AND X

Starting at  
**\$465**  
 Per Month OAC

Boat	Price	Mercury
20' Sport	\$52,530	115 CT EFI
22' Sport	\$58,525	115 CT EFI
20' X	\$59,620	115 CT EFI
22' X	\$69,595	150 EFI



## STANDARD FEATURES

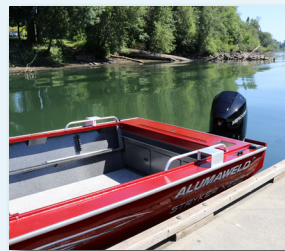
- (2) Comfort Seats on Storage Boxes
- Full Coaming Gunnel
- Top, Side Curtains, Back Drop & Boot
- Electric Bilge Pump
- Mechanical Steering (Sport models)
- Hydraulic Steering (X models)
- Deluxe Dash Panel w/ 5 Switches
- Dual USB Port & 12-Volt Outlet
- Between Console Locking Storage
- Locking Foredeck Storage
- Washdown Pump
- Bow Fish Box & Storage
- Extra-Wide Transom Tray w/ Hot Water Sink
- Walk-Through Windshield w/ Wiper
- Alumadrive Transom (X model)
- Rogue Trailer (T/A w/ Brakes on 22' model)
- Swing Away Tongue (20' model)



**Stryker Sport**



**Stryker X**



**Stryker X**

Model Specs	Length	Beam	Beam at Chine	Inside Freeboard	Side Height	Transom Height	Deadrise	Bottom Thickness	Side Thickness	Persons/Capacity	Approx. Weight	Weight Capacity	Fuel Capacity	Max HP Prop/Jet
20' Sport	20' 3"	89"	72"	30.25"	33.5"	25"	14°	0.190	0.125	5/750 lbs	1,550 lbs	1,500 lbs	38 Gal	150/105 HP
22' Sport	22' 3"	89"	72"	30.25"	33.5"	25"	14°	0.190	0.125	6/900 lbs	1,715 lbs	1,900 lbs	45 Gal	200/140 HP
20' X	22' 3"	89"	72"	29.75"	33.5"	25"	18°	0.190	0.125	6/900 lbs	1,685 lbs	1,700 lbs	38 Gal	150 HP
22' X	24' 3"	89"	72"	29.75"	33.5"	25"	18°	0.190	0.125	7/1,050 lbs	1,850 lbs	1,900 lbs	45 Gal	200 HP



Starting at  
**\$579**  
 Per Month OAC

# INTRUDER

Boat	Price	Mercury
20'	<b>\$74,300</b>	150 EFI
22'	<b>\$76,115</b>	150 EFI
24'	<b>\$81,330</b>	150 EFI

## STANDARD FEATURES

- (2) Comfort Seats on Storage Boxes
- (2) Side Bench Seats on Storage Boxes
- Walk-Through Windshield w/ Wiper
- Alumadrive Transom
- Top, Side Curtains, Back Drop & Boot
- Master Fishing Package (20' & 22' models)
- Welded Bow Rails
- Transom Fish Box
- Locking Foredeck Storage
- Hydraulic Steering
- Electric Bilge Pump w/Auto Float Switch
- Switch Panel w/ Circuit Breakers
- Dual USB Port & 12-Volt Outlet
- Rogue Trailer w/ Tandem Axle & Disc Brakes on Both Axles
- Swing Away Tongue (20' model)



Model Specs	Length	Beam	Beam at Chine	Inside Freeboard	Side Height	Transom Height	Deadrise	Bottom Thickness	Side Thickness	Persons/ Capacity	Approx. Weight	Weight Capacity	Fuel Capacity	Max HP Prop/Jet
20'	22' 9"	99.5"	82"	29"	33"	25"	18°	0.190	0.125	6/900 lbs	2,295 lbs	1,700 lbs	60 Gal	200 HP
22'	24' 9"	99.5"	82"	29"	33"	25"	18°	0.190	0.125	8/1,200 lbs	2,475 lbs	1,900 lbs	60 Gal	225 HP
24'	26' 9"	99.5"	82"	29"	33"	25"	18°	0.250	0.160	9/1,350 lbs	2,665 lbs	2,400 lbs	80 Gal	250 HP



# FORMULA VEE

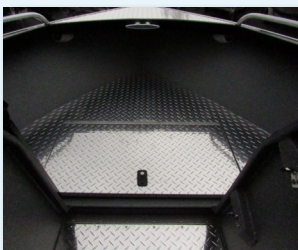


Starting at  
**\$645**  
 Per Month OAC

Boat	Price	Mercury
24'	<b>\$82,329</b>	150 EFI
26'	<b>\$96,995</b>	200 EFI

### STANDARD FEATURES

- 2 Comfort Seats on Lockable Storage Boxes
- Top, Side Curtains, Back Drop & Boot
- Fish Box in Step Deck
- Dual Fish Boxes with Lids in Transom Deck
- Foredeck Storage Locker w/Locking Door
- Welded Aluminum Bow Rails
- Alumadrive Bracket
- Aluminum Transom Doors w/Toe Kick & Floor Drains
- Hydraulic Steering
- Slotted Chine Extrusions
- Transom Fishbox
- Washdown Pump
- Welded Bow Rails
- Deluxe Switch Panel w/USB Port & 12-Volt Outlet
- Electric Bilge Pump w/Auto Float Switch
- Rogue Trailer w/ Tandem Axle & Disc Brakes on Both Axles



Model Specs	Length	Beam	Beam at Chine	Inside Freeboard	Side Height	Transom Height	Deadrise	Bottom Thickness	Side Thickness	Transom Thickness	Persons/Capacity	Approx. Weight	Weight Capacity	Fuel Capacity	Max HP Prop/Jet
24'	26' 5"	101"	82"	31"	36"	30"/25"	18°	0.250	0.160	0.250	9/1,350 lbs	2,960 lbs	2,400 lbs	80 Gal	400 HP
26'	28' 5"	101"	82"	31"	36"	30"/25"	18°	0.250	0.125	0.250	9/1,350 lbs	3,210 lbs	2,400 lbs	120 Gal	500 HP



Boat	Mercury
22'	150 EFI
24'	150 EFI
26'	150 EFI
28'	150 EFI

### STANDARD FEATURES

- (2) DLX Comfort Seats on Storage Boxes
- Hardtop with sliding windows, top hand rails, deck light and drop curtain
- Forward Storage Compartment & Floor Storage
- (2) 2000 GPH Electric Bilge Pump w/(1) Auto Switch
- Aluminum Transom with (2) Doors, Toe Kick & Floor Drains
- Locking Foredeck Storage
- Deluxe Switch Panel w/Dual USB Ports & 12-Volt Outlet
- Transom Fishbox
- Full Length Storage Trays
- Locking Rear Storage
- Washdown System
- Navigation Lights
- Rogue Trailer w/ Tandem Axle & Disc Brakes on Both Axles



# HORIZON HARDTOP

Launch Date Spring 2025

Model Specs	Length	Beam	Beam at Chine	Inside Freeboard	Side Height	Transom Height	Deadrise	Bottom Thickness	Side Thickness	Persons/ Capacity	Approx. Weight	Weight Capacity	Fuel Capacity	Max HP Prop/Jet
22'	24' 9"	101"	82"	31"	36"	25"	18°	0.250	0.160	8/1,200 lbs	2,475 lbs	1,900 lbs	60 Gal	250 HP
24'	26' 9"	101"	82"	31"	36"	30"/25"	18°	0.250	0.160	9/1,350 lbs	2,665 lbs	2,400 lbs	80 Gal	300 HP
26'	28' 5"	101"	82"	31"	36"	30"/25"	18°	0.250	0.160	9/1,350 lbs	2,960 lbs	2,400 lbs	80 Gal	400 HP
28'	30' 5"	101"	82"	31"	36"	30"/25"	18°	0.250	0.160	9/1,350 lbs	3,120 lbs	2,400 lbs	120 Gal	500 HP



# KINGFISHER

KingFisher boats traces its roots back to 1959. Today, it is one of the fastest growing brands of welded heavy-gauge boats in North America with 22 hand-built models.

KingFisher's goal is simple – build a tough heavy-gauge welded aluminum hull with Pre-Flex® technology and focus on market defining features including intelligent low maintenance design with an ideal balance of ride performance, precision handling and comfort. They test and refine their hulls in all types of conditions for maximum fishing and handling performance.

Renowned for leading styling and ride for anglers and adventurous families who seek maximum value, safety and performance from their fishing and boating machines.



## SIGNATURE FEATURES

- Pre-Flex Hull
- Full Side Paint
- Zolatone Painted Cabin & Decks
- Transom Fish Box w/ Cutting Board Lid
- EZ Loader Trailer





# WARRIOR SPORT & TILLER

Starting at  
**\$329**  
 Per Month OAC

Boat	Price	Mercury
1825 Sport	<b>\$48,950</b>	60 CT EFI
1825 Tiller	<b>\$36,850</b>	60 CT EFI

## STANDARD FEATURES

- Rigid Full Length Compound Angle Box Stringers
- Welded Bow Stem/Heavy Duty Keel Guard
- (4) Folding Stainless Deck Cleats
- Painted Bow Rub Rail Extrusion
- EZ Loader Trailer w/Brakes

## Sport Feature Package

- (1) Swivel Fishmaster Seat on Permanent Pedestal
- (2) Swivel Fishmaster Seats on Removable Pedestals
- (5) Unilock Removable Pedestal Bases
- Sport Helm and Steering Wheel
- Lockable Rod Side Storage
- Sure Catch Rail System
- Walk-through Windshield
- Navigation Lights Package
- (4) Drink Holders

## Tiller Feature Package

- Fishmaster Seat on Storage Box
- Self-Draining Splash Well w/ Storage Tray
- Under Bow Storage w/ Diamond Plate Door



**Tiller**



**Sport**



**Sport**

Model Specs	Length	Beam	Side Height	Transom Height	Deadrise	Bottom Thickness	Side Thickness	Approx. Weight	Fuel Capacity	Max HP
1825 Sport	18' 6"	7' 4"	2' 7"	25"	12°	0.160	0.125	1,450 lbs	25 Gal	150 HP
1825 Tiller	18' 6"	7' 4"	2' 7"	20"	12°	0.160	0.125	900 lbs	25 Gal	80 HP



# ARROW SPORT



Starting at  
**\$545**  
 Per Month OAC

Boat	Price	Mercury
1925	\$69,325	115 EFI
2125	\$84,350	150 EFI

### STANDARD FEATURES

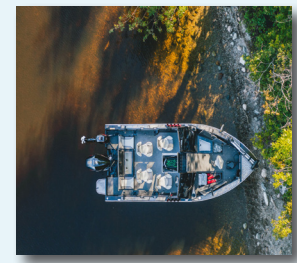
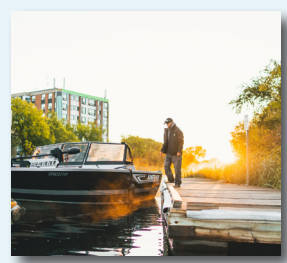
- (1) Swivel Pro Angler Seat on Permanent Base
- (2) Swivel Pro Angler Seats on Removable Base
- (5) Unilock Removable Pedestal Bases
- Folding Rear Jump Seats
- XL Dash for Flush Mounted Electronics
- Painted Bow Rub Rail Extrusion
- Dual USB Port & 12-Volt Outlet
- Navigation Lights Package
- Rigid Full Length Compound Angle Box Stringers
- Center Bow Deck Rod Storage for (11) Rods
- Sure Catch Rail System
- EZ Loader Trailer w/Brakes

### 1925 Feature Package

- Walk-through Windshield

### 2125 Feature Package

- Bonded Windshield
- 2 Welded XL Transducer Brackets



Model Specs	Length	Beam	Side Height	Transom Height	Deadrise	Bottom Thickness	Side Thickness	Approx. Weight	Fuel Capacity	Max HP
1925	19' 6"	96"	29"	25"	Variable 18°	0.125	0.190	1,942 lbs	55 Gal	225 HP
2125	21'	102"	31"	25"	Variable 18°	0.125	0.190	2,144 lbs	55 Gal	350 HP



Starting at  
**\$379**  
 Per Month OAC

Boat	Price	Mercury
1825	\$42,400	60 CT EFI
2025	\$50,975	115 CT EFI

### STANDARD FEATURES

- (2) Fishmaster XL Seats on Pedestals
- Welded Bow Stern/Heavy Duty Keel Guard
- Painted Bow Rub Rail Extrusion
- Walk-Through Windshield w/ Wiper
- Back Drop Curtain, Top & Sides
- Dual USB Port & 12-Volt Outlet
- Navigation Lights Package
- Rigid Full Length Compound Angle Box Stringers
- Passenger Grab Handle
- Rod Storage for (6) Rods
- Diamond Plate Anti-Scuff Kick Plates
- EZ Loader Trailer w/Brakes

### 1825 Feature Package

- Canvas Half Top w/ Side Curtains & Boot Cover
- Sport Helm & Steering Wheel

### 2025 Feature Package

- HD Square Tube Canvas Half Top w/ Side Curtains & Boot
- Anti-feedback Steering & Sport Steering Wheel
- Lockable Bow Storage Box



Model Specs	Length	Beam	Side Height	Transom Height	Deadrise	Bottom Thickness	Side Thickness	Approx. Weight	Fuel Capacity	Max HP
1825	18' 6"	88"	31"	25"	12°	0.160	0.125	1,100 lbs	25 Gal	115 HP
2025	20' 6"	92"	34"	25"	16°	0.190	0.125	1,448 lbs	38 Gal	150 HP



# ESCAPE



Starting at  
**\$495**  
 Per Month OAC

Boat	Price	Mercury
20	\$63,100	115 CT EFI
20 HT	\$71,995	115 CT EFI
2225	\$94,150	150 EFI
2425	\$101,695	150 EFI

### STANDARD FEATURES

- Dual USB Port & 12 Volt Outlet
- Navigation Lights Package
- Transom Tackle Drawer
- Transom Fishbox
- Full-width Transom Platform
- EZ Loader Trailer w/Brakes

### 2025 Hard Top Feature Package

- (2) Fisherman Seats On Boxes
- Sliding Side Windows
- Upper Cabin Storage Trays
- Interior Cabin Light

### 2025 Soft Top Feature Package

- (2) Fishmaster Seats on Boxes
- Self-Bailing Recessed Bow
- Driver Side Windshield Wiper
- Hydraulic Steering
- Single Engine Offshore Motor Bracket
- Electric Bilge Pump
- Back Drop Curtain

### 2225 & 2425 Standard Feature Package

- (2) Rivermaster Seats on Boxes
- Hydraulic Steering w/ Stainless Wheel
- Self-Bailing Recessed Bow
- Cabin Bulkhead & Locking Door (24')
- Back Drop Curtain (22')
- (2) 36" Storage Bench Seats (22')
- (2) 42" Storage Banch Seats (24')



Model Specs	Length	Beam	Side Height	Transom Height	Cabin Length	Cabin Headroom	Deadrise	Bottom Thickness	Side Thickness	Approx. Weight	Fuel Capacity	Max HP
2025	22' 4"	96"	35"	25"	86"	73"	16°	0.190	0.125	1,950 lbs	60 Gal	225 HP
2225	24'	96"	37"	25"	86"	73"	Variable 16°	0.190	0.125	2,495 lbs	85 Gal	250 HP
2425	26' 11"	102"	37"	25"	90"	74"	Variable 16°	0.190	0.125	3,280 lbs	85 Gal	300 HP



Starting at  
**\$809**  
 Per Month OAC

Boat	Price	Mercury
2325	<b>\$103,550</b>	150 EFI
2625	<b>\$125,795</b>	225 EFI
2825	<b>\$131,975</b>	250 EFI

**STANDARD FEATURES**

- Stainless Offshore Bow Rail
- Foul Weather Bow Toe Rail
- Aluminum Anchor Roller
- Stainless Steel Roof Rails
- Overhead Radio Shelf
- Hydraulic Steering w/ Stainless Steel Wheel
- Dual USB Port & 12-Volt Outlet
- Cabin Bulkhead & Locking Door
- (16) Roof-Mounted Rod Holders
- Trim Tabs w/ Dash Indicator
- Multi-Function Gauge
- EZ Loader Trailer w/Brakes

**2325 Northwest Package**

- (2) 36" Storage Bench Seats
- Porta Potty in Storage Bench Seat
- Porta Potty Privacy Curtain
- Bed Conversion Kit

**2625 & 2825 Pacific Package**

- (2) 36" Storage Bench Seats
- (2) 42" Painted Storage Bench Sleeper Seats
- Flush Toilet In Bench Seat
- Pantographic Windshield Wipers
- (2) Transom Mounted Sacrificial Anodes



Model Specs	Length	Beam	Side Height	Transom Height	Cabin Length	Cabin Headroom	Deadrise	Bottom Thickness	Side Thickness	Approx. Weight	Fuel Capacity	Max HP
2325	24' 3"	96"	37"	25"	86"	73"	16°	0.190	0.125	2,660 lbs	85 Gal	250 HP
2625	27'	102"	37"	25"	86"	73"	Variable 18°	0.190	0.125	3,795 lbs	125 Gal	300 HP
2825	29'	102"	46"	30"	86"	74"	Variable 18°	0.190	0.125	4,500 lbs	125 Gal	400 HP



# XRS OFFSHORE



Starting at  
**\$1,465**  
 Per Month OAC

Boat	Price	Mercury
27 XRS	<b>\$187,150</b>	250 EFI
30 XRS	<b>\$240,295</b>	Dual 150 EFI

## STANDARD FEATURES

- (1) Suspension Helm Seat with Slider
- Port Side Dinette Seating Converts to Sleeping Berth
- Finished Cuddy with Carpeting and Hull Liner
- XL Dash for Flush Mounted Electronics
- Hatch with Screen and 2 Portholes with Screens
- Dual USB Port & 12-Volt Outlet
- Stand Up Enclosed Head
- Formed Compound Angle Box Stringers/ Full Length
- Aluminum Overhead Radio Shelf
- 6 Drink Holders
- Navigation Lights Package
- Fish Lockers and Raised Transom Fish Locker
- Integral Aluminum Cockpit Roof Extension
- Black 2.3 cu.ft DC Fridge
- Aft Cockpit KingDeck Marine Floors & Gunnel Tops
- Starboard Galley
- EZ Loader Trailer w/Brakes



Model Specs	Length	Beam	Side Height	Transom Height	Cabin Length	Cabin Headroom	Deadrise	Bottom Thickness	Side Thickness	Approx. Weight	Fuel Capacity	Max HP
2725	27' 11"	8'6"	3'2"	25"	8'3"	6'2"	Variable 18°	0.250	0.125	3,795 lbs	120 Gal	400 HP
3025	30' 5"	9'6"	3'6"	25"	9'4"	6'5"	Variable 18°	0.250	0.160	4,500 lbs	160 Gal	500 HP

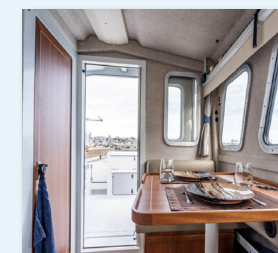


Starting at  
**\$2,065**  
 Per Month OAC

Boat	Price	Mercury
3025	<b>\$263,995</b>	Dual 150 EFI
3225	<b>\$325,295</b>	Dual 200 EFI
3425	<b>\$363,750</b>	Dual 200 EFI

### STANDARD FEATURES

- Water Tight Rear Cabin Bulkhead
- Water Tight Sliding Rear Door
- Fully Welded Rub Rail/Stiffener
- Intergrated Raised Bow Coaming
- Heavy Duty Offshore Bow Rails
- Stainless Interior & Exterior Hard Top Rails
- Stainless Steel Sink & Fresh Water Tank
- Full-Width Motor Bracket w/ Platform
- Walk-through Transom Door
- Self-Bailing Cockpit w/ Freeing Ports
- Cockpit Fish Lockers w/ Discharge Pumps
- Anchor Rope Locker
- Tan Destination King Leather Upholstery
- Driver & Passenger Suspension Seats w/ Sliders
- Dinette Bench Seating Converts to Queen Sleeping Berth
- Stand Up Enclosed Head w/ Flushing Toilet
- Hydraulic Steering 3-Spoke Wheel
- Queen V-Berth w/ Mattress
- Stainless DC Fridge
- (2) Floor Fishboxes
- Side Cabin Window Valances with Curtains
- Radio Shelf
- EZ Loader Trailer w/Brakes



Model Specs	Length	Beam	Side Height	Transom Height	Cabin Length	Cabin Headroom	Deadrise	Bottom Thickness	Side Thickness	Approx. Weight	Fuel Capacity	Max HP
3025	30'	114"	46"	25"	116.5"	76"	Variable 18°	0.250	0.160	6,928 lbs	200 Gal	600 HP
3225	32'	120"	46"	25"	126"	82"	Variable 18°	0.250	0.160	8,400 lbs	250 Gal	700 HP
3425	35' 1"	120"	46"	30"	135"	82"	Variable 18°	0.250	0.160	9,510 lbs	300 Gal	900 HP



# SMOKER CRAFT

Smoker Craft's reputation for durable excellence is earned. From the remote Alaskan bush where Sportsman Sleds navigate wild rivers season-after-season to the open water of the mighty Columbia River where Smoker Craft (Lodges, Tracers, Alaskans and Ospreys) troll, cruise and crab.

From the extensive bottom structure, hull design and integrated spray rails on most models, Smoker Craft boats perform flawlessly and are recognized as "best in class." Smoker Craft boats run drier, lift higher and convert outboard horsepower into bristling performance.

All Smoker Craft boats are built to last. Smoker Craft sets a high bar for durability. Lifetime hull warranty, plus a 6-year warranty on all components, upholstery, carpet, and electronics.



## Backed By Peace of Mind

- Lifetime hull warranty, plus a 6-year warranty on all components, upholstery, carpet, and electronics.
- Covers All Parts And Labor
- Transferable To Second Owner



Starting at  
**\$159**  
 Per Month OAC

# ALASKAN



Boat	Price	Mercury
Split Seat Deluxe		
13	\$10,495	9.9 EFI
15	\$11,995	15 EFI
Side Console Deluxe		
15	\$14,735	15 EFI

### STANDARD FEATURES

- Walk-Thru Seat Boxes
- Portable Fuel Tank & Hose
- Galvanized Trailer

### Side Console Deluxe Features

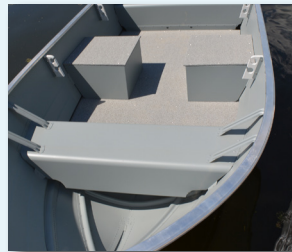
- Electric Start
- (2) Seats On Storage Boxes
- Bow Rails

### Split Seat Deluxe Features

- (3) Seats

### Let's Go Fishing Package:

- (3) Rod Holders
- (3) Life Vests
- Horn/Paddle
- Throwable Cushion



Model Specs	Length	Beam	Depth	Interior Depth	Max Person	Dry Weight	Fuel Capacity	Max HP Prop/Jet
13 DLX	12' 11"	66"	26"	20"	3	225 lbs	Portable	20 HP
15 DLX/SC	14' 11"	68"	27"	21"	4	270 lbs	Portable	35 HP



# PRO LODGE



Starting at  
**\$229**  
 Per Month OAC

Boat	Price	Mercury
16	<b>\$24,575</b>	25 EFI
16 SC	<b>\$29,995</b>	40 EFI

### STANDARD FEATURES

- (3) Seats, (2) on Storage Boxes
- Bow Livewell/Fishbox
- Bow Storage Compartment
- Built in Fuel Tank
- Electric Start
- Navigation Lights
- Bilge Pump
- Galvanized Trailer
- Side Load Guides
- Swing Tongue

### Side Console Deluxe Features

- (2) Seats On Storage Boxes
- Trim & Tilt



Model Specs	Length	Beam	Interior Depth	Transom Height	Deadrise	Max Persons	Max Capacity	Fuel Capacity	Max HP
16	16' 6"	82"	24"	20"	10°	6	815 lbs	12 Gal	60 HP



Starting at  
**\$235**  
 Per Month OAC

Boat	Price	Mercury
16	\$24,940	25 EFI
18	\$32,795	50 EFI

**STANDARD FEATURES**

- (2) Deluxe Seats on Pedestals
- Livewell/Fish Box
- Locking Rod Storage
- Tiller Steering
- Electric Start
- Power Trim & Tilt (18')
- Navigation Lights
- Bilge Pump
- Galvanized Trailer
- Side Load Guides
- Swing Tongue



Model Specs	Length	Beam	Interior Depth	Transom Height	Deadrise	Max Persons	Max Capacity	Bottom Gauge	Side Gauge	Fuel Capacity	Max HP
160	16' 10"	89"	22"	20"	10°	6	900 lbs	0.100	0.8	17 Gal	75 HP
180	18' 10"	89"	22"	20"	10°	6	900 lbs	0.100	0.8	17 Gal	90 HP



# SPORTSMAN



Starting at  
**\$205**  
 Per Month OAC

Boat	Price	Mercury
16	\$21,945	25 EFI Prop
18	\$29,495	40 EFI Prop
Jet		
16	\$25,325	60/40 Jet EFI
18	\$35,295	90/65 Jet EFI

## STANDARD FEATURES

- Rod Storage
- Bow Fish Box
- Semi-vee Bottom
- Welded Construction
- Tiller Steering
- Navigation Lights
- Bilge Pump
- Galvanized Trailer
- Side Load Guides
- Swing Tongue

## GUIDE SEATS PACK (Add \$1,625)

- (2) Seats on Boxes
- (1) Seat on 4-Legged Pedestal

## PRO PACKAGE (Add \$2,115)

- Top Loading Locking Rod Storage
- Port & Starboard
- Additional Locking Storage Compartments
- Livewell In-Bow Fish Box



Model Specs	Length	Beam	Interior Depth	Transom Height	Dry Weight	Deadrise	Max Person	Max Capacity	Seats	Fuel Capacity	Max HP Prop/Jet
16	16' 7"	86"	26"	20"	840 lbs	10°	6	800 lbs	2	17 Gal	70/65 HP
18	18' 7"	92"	26"	20"	900 lbs	10°	6	825 lbs	2	28 Gal	90/80 HP



Starting at  
**\$329**  
 Per Month OAC

Boat	Price	Mercury
1872	\$40,495	60 EFI Prop
2072	\$48,275	90 EFI Prop
Jet		
1872	\$45,195	90/65 Jet EFI
2072	\$50,495	115/80 Jet EFI

### STANDARD FEATURES

- (2) Seats on Storage Boxes
- In-Floor Storage
- Bow Livewell/Fishbox
- Bow Anchor Storage
- Electronics Storage
- Washdown Pump
- 2/3 Offset Transom Box
- Hot Water Sink
- Diamond Plate Bow Guard
- Navigation Light
- Bilge Pump
- Galvanized Trailer
- Side Load Guides
- Swing Tongue

# PRO SPORTSMAN



Model Specs	Length	Beam	Interior Depth	Depth	Transom Height	Dry Weight	Deadrise	Max Persons	Max Capacity	Seats	Fuel Capacity	Max HP Prop/Jet
1872 T	18' 6"	99"	27"	33.5"	25"	1,595 lbs	10°	6	800 lbs	2	33 Gal	90/65 HP
2072 T	20' 6"	99"	27"	33.5"	25"	1,620 lbs	10°	6	850 lbs	2	33 Gal	150/105 HP



# PRO TRACER

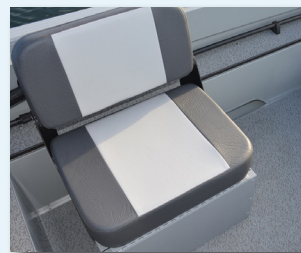


Starting at  
**\$301**  
 Per Month OAC

Boat	Price	Mercury
162	\$32,495	40 EFI

### STANDARD FEATURES

- (2) Seats On Storage Boxes
- (2) Rear Side Jump Seats
- Top, Side Curtains, & Back Drop
- Bow Livewell/Fishbox
- Bow Rails
- Bow Storage Compartment
- Navigation Lights
- Bilge Pump
- Galvanized Trailer
- Side Load Guides
- Swing Tongue



Model Specs	Length	Beam	Interior Depth	Transom Height	Dry Weight	Deadrise	Max Person	Max Capacity	Seats	Fuel Capacity	Max HP Prop
162	16' 6"	82"	24"	20"	1,025 lbs	10°	6	815 lbs	2	12 Gal	90 HP



Starting at  
**\$339**  
Per Month OAC

Boat	Price	Mercury
162	<b>\$36,450</b>	50 EFI
172	<b>\$40,995</b>	60 CT EFI



### STANDARD FEATURES

- High Back Driver & Passenger Seats
- (2) Rear Side Jump Seats
- Top, Side Curtains, & Back Drop
- Bow Livewell/Fishbox
- In-Floor Fish Box
- Rod Storage
- Bow Storage Compartment
- Bow Mount Troller Prewire
- Navigation Lights
- Galvanized Trailer
- Side Load Guides
- Swing Tongue



Model Specs	Length	Beam	Interior Depth	Transom Height	Dry Weight	Deadrise	Max Person	Max Capacity	Seats	Fuel Capacity	Max HP
162	16' 4"	90"	27"	20"	1,075 lbs	17°	6	765 lbs	2	20 Gal	115 HP
172	17' 4"	90"	27"	20"	1,165 lbs	17°	6	850 lbs	2	25 Gal	150 HP



# ULTIMA

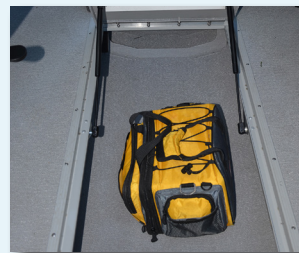


Starting at  
**\$305**  
 Per Month OAC

Boat	Price	Mercury
182	\$50,195	90 EFI

## STANDARD FEATURES

- (2) Seats On Posts
- Flip Up Jump Seats
- Top, Side Curtains, & Wind Curtain
- Bow Livewell/Fishbox
- Bow Storage Compartment
- Rod Storage
- Bow Mount Troller Prewire
- Navigation Lights
- Bilge Pump
- Galvanized Trailer
- Side Load Guides
- Swing Tongue



Model Specs	Length	Beam	Interior Depth	Transom Height	Dry Weight	Deadrise	Max Persons	Max Capacity	Seats	Fuel Capacity	Max HP Prop
182	18' 2"	96"	27"	25"	1,425 lbs	17°	8	1,100 lbs	3	25 Gal	175 HP



Starting at  
**\$415**  
 Per Month OAC

Boat	Price	Mercury
18	\$50,875	60 EFI
20	\$61,745	115 EFI
20 OS	\$68,795	115 EFI CT

**STANDARD FEATURES**

- (2) Seats on Storage Boxes
- (2) Benches on Posts
- Tackle Tray
- Bow Fish Box
- Rod Storage
- Under Console Storage
- Welded Windshield
- Transom Fish Box (OS only)
- Bilge Pump
- Galvanized Trailer
- Side Load Guides
- Swing Tongue

# PHANTOM



Model Specs	Length	Beam	Interior Depth	Depth	Transom Height	Transom Width	Dry Weight	Deadrise	Max Person	Max Capacity	Seats	Fuel Capacity	Max HP
18 X2	18' 6"	96"	33"	45"	25"	96"	1,680 lbs	15°	6	850 lbs	2	32 Gal	150 HP
20 X2	20' 5"	98"	33"	47"	25"	96"	1,785 lbs	19°	6	800 lbs	2	25 Gal	175 HP
20 X2 OS	22'8"	98"	33"	47"	25"	96"	2,520 lbs	19°	6	900 lbs	2	55 Gal	250 HP



# STARWELD

With great features and all-welded reliability, Starweld has the right boat for your style of fishing and budget. Their lineup of boats builds on the core values that have guided the company since 1903 – to build innovative and high-quality boats. Their history is one of constant innovation, and that only results from spending time on the water.

Fishing boats need to be tough, and that begins with a solid foundation. That's why every Starweld model rides on a high quality, fully welded deep-V hull that's built with heavy-duty, internal torsion beam construction for unmatched strength and durability. Every Starweld gets a full-length reverse chine hull that gives you faster planing times and a dry, smooth ride even with a full tournament load. Plus, choose from a long list of options that let you rig your Starweld just the way you want.



#### Backed By Peace of Mind

- Limited Lifetime Warranty On Hull And Structure
- 6-Year Warranty On All Components, Carpet, Upholstery & Electronics
- Covers All Parts And Labor
- Transferable To Second Owner



Starting at  
**\$369**  
 Per Month OAC

Boat	Price	Mercury
18 DC	<b>\$45,495</b>	90 EFI
18 DC PRO	<b>\$47,395</b>	90 EFI

### STANDARD FEATURES

- (3) Deluxe Movable Seats
- Convertible Transom Bench Seat
- Convertible Rear Bench Seats
- Top, Side Curtains & Wind Curtain
- Deluxe Console w/ Gauge Package
- Jensen Stereo w/ Bluetooth
- Cup Holders
- Aerated Livewells Bow & Stern
- Locking Rod Storage
- Bow Mount Troller Prewire
- Vinyl Floorboards w/ Casting Platforms
- Galvanized Trailer
- Side Load Guides
- Swing Away Tongue

# FUSION



Model Specs	Length	Beam	Interior Depth	Transom Height	Dry Weight	Max Persons	Max Capacity	Seats	Fuel Capacity	Max HP
18 DC	17' 4"	90"	26"	20"	1,165 lbs	6	850 lbs	3	23 Gal	115 HP
18 DC PRO	17' 4"	90"	26"	25"	1,165 lbs	6	850 lbs	3	35 Gal	115 HP



# FLEX

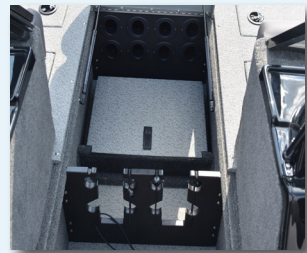
Starting at  
**\$319**  
 Per Month OAC



Boat	Price	Mercury
17 DC	\$39,295	60 CT EFI
19 DC	\$49,995	90 EFI

**STANDARD FEATURES**

- (3) Deluxe Movable Seats
- Top, Side Curtains & Wind Curtain
- Deluxe Console w/ Gauge Package
- Jensen Stereo w/ Bluetooth
- Aerated Livewells in Bow & Stern
- Locking Rod Storage
- Cup Holders
- Bow Mount Troller Prewire
- Vinyl Floorboards w/ Casting Platforms
- Galvanized Trailer
- Side Load Guides
- Swing Away Tongue



Model Specs	Length	Beam	Inside Depth	Person Capacity	Weight Capacity	Dry Weight	Fuel Capacity	Max HP
17 DC	16' 4"	90"	26"	6	765 lbs	1,227 lbs	26 Gal	115 HP
19 DC	18' 6"	92"	28"	7	765 lbs	1,395 lbs	40 Gal	115 HP



# SunChaser

## PONTOONS

Our lives are all about the memories we make, pulling the kids in a tube, catching the big fish, and having lunch in the open air with an incredible view. From cruising and entertaining to watersports and more, SunChaser builds 50 different pontoon models, making it easy to find the perfect ride for you and your family.

SunChaser's precision manufacturing allows you to enjoy premium features like stylish LED underdeck and underwater lighting, Bluetooth-enabled stereos, and upscale furniture. Choose from an extensive selection of tube configurations like X-Treme Performance Strakes and PR25 center tube, or the PTS system to experience an exhilarating thrill ride. Get in on the fun now!



### Backed By Peace of Mind

- Lifetime Deck, Tube & Transom Warranty
- 6-Year Warranty On Components, Carpet, Upholstery & Electronics
- Covers All Parts And Labor
- Transferable To Second Owner







Starting at  
**\$229**  
 Per Month OAC

Boat	Price	Mercury
Vista LR & Fish		
16	\$28,295	25 EFI
18	\$29,495	25 EFI
20	\$33,595	40 EFI
22	\$39,295	50 EFI

# VISTA FISH



# VISTA LR



TRAILER	Pricing
Single Axle Trailer (16-20')	\$4,145
Tandem Axle Trailer (20'-22')	\$6,245
Tritoon Kit	\$325

### STANDARD FEATURES

- Low Back Helm Seat
- Vista Console
- Tachometer w/ Fuel Gauge
- 8' 5" Bimini Top
- Cupholders
- Sea Weave Flooring
- Aluminum Five-Step Ladder

Model Specs	Length	Beam	Transom Height	Tube Diameter	Tube Gauge	Person Capacity	Capacity Weight	Dry Weight	Fuel Capacity	Max HP
16 LR/Fish	17'	96"	20"	23"	0.08	6	840 lbs	1,275 lbs	20 Gal	40 HP
18 LR/Fish	19'	96"	20"	23"	0.08	8	1,075 lbs	1,425 lbs	20 Gal	60 HP
20 LR/Fish	20' 10"	96"	20"	23"	0.08	9	1,210 lbs	1,875 lbs	20 Gal	90 HP
22 LR/Fish	22' 10"	96"	20"	23"	0.08	9	1,225 lbs	2,027 lbs	20 Gal	115 HP



Starting at  
**\$255**  
 Per Month OAC

# LUCERNE

New



Boat	Price	Mercury
20 LR DH	<b>\$31,495</b>	40 CT EFI
22 LR DH	<b>\$35,495</b>	50 CT EFI
22 LR DH Sport	<b>\$40,875</b>	50 CT EFI

TRAILER	Pricing
Single Axle Trailer (18'-20')	<b>\$4,145</b>
Tandem Axle Trailer (20'-22')	<b>\$6,245</b>
Tritoon Kit	<b>\$325</b>

## STANDARD FEATURES

- Low Back Helm Seat on Slider
- Table with Cup Holders
- MC5 Stereo w/ Bluetooth
- Color Coordinated Bimini Top
- Console Storage
- Rotocast Console with Tachometer and Fuel Gauge
- Extreme Tilt Steering
- Black Rails, Deck Trim, & Bimini Top Frame
- 23" Diameter Tubes with Splash Fins & Standard Keels
- 6" Deck Cleats
- 3-Step Aluminum Ladder

Model Specs	Length	Beam	Tube Diameter	Person Capacity	Capacity Weight	Dry Weight	Fuel Capacity	Max HP
20 LR DH	20' 10"	96"	23"	9	1,695 lbs	1,875 lbs	20 Gal	90 HP
22 LR DH	22' 10"	96"	23"	10	1,930 lbs	2,027 lbs	20 Gal	115 HP
22 LR DH Sport	22' 10"	96"	23"	10	1,930 lbs	2,027 lbs	20 Gal	115 HP





**GENEVA 4.0**



**GENEVA CRUISE**



**GENEVA FISH**

Starting at  
**\$339**  
 Per Month OAC

Boat	Price	Mercury
<b>Geneva Cruise</b>		
20	<b>\$36,595</b>	50 CT EFI
22	<b>\$44,295</b>	60 CT EFI
<b>Geneva Fish &amp; Fish 4.0</b>		
20	<b>\$37,795</b>	50 CT EFI
22	<b>\$45,875</b>	60 CT EFI

TRAILER	Pricing
Tandem Axle Trailer (20'-22')	<b>\$6,245</b>
Tritoon Kit	<b>\$325</b>

**STANDARD FEATURES**

- Platinum Console
- 8' 5" Bimini Top
- Changing Room
- Oval Table
- Jensen AM/FM Bluetooth & Speakers
- Cupholders
- Docking Lights
- Aluminum Five-Step Ladder
- Gauge Package

**GENEVA FISH & FISH 4.0 FEATURES**

- High-Back Helm Chair
- Stainless Steel Ladder
- Rear Fishing Seats (Fish)
- Front & Rear Fishing Seats (Fish 4.0)

Model Specs	Length	Beam	Tube Diameter	Tube Gauge	Person Capacity	Capacity Weight	Dry Weight	Dry Weight (Fish 4.0)	Fuel Capacity	Max HP w/ Third Tube
20	20' 10"	102"	25"	0.090	10	1,410 lbs	1,850 lbs	1,770 lbs	20 Gal	200 HP
22	22' 10"	102"	25"	0.090	11	1,500 lbs	2,061 lbs	2,100 lbs	30 Gal	250 HP



Starting at

**\$315**

Per Month OAC

Boat	Price	Mercury
Geneva LR DH		
20	<b>\$38,995</b>	50 CT EFI
22	<b>\$45,995</b>	60 CT EFI
Geneva LR PSB		
20	<b>\$39,275</b>	50 CT EFI
22	<b>\$47,675</b>	60 CT EFI
Geneva Sport SB		
23	<b>\$55,275</b>	60 CT EFI

TRAILER	Pricing
Tandem Axle Trailer (20'-22')	<b>\$6,245</b>
Tritoon Kit	<b>\$325</b>

### STANDARD FEATURES

- Platinum Console
- Oval Table
- Jensen AM/FM Bluetooth & Speakers
- 8' 5" Bimini Top
- Changing Room \*
- Cupholders
- Aluminum Five-Step Ladder
- Gauge Package
- Docking Lights

### GENEVA LR PSB & SB FEATURES

- Aluminum Five-Step Ladder (LR DH)
- Stainless Steel Ladder (LR PSB & SB)
- Port Swing Back Seating (LR PSB)
- Swing Back Lounger Seating (SB)

\* Changing Room not included on 20' PSB

## GENEVA 23 SB



## GENEVA LR DH



## GENEVA LR PSB

Model Specs	Length	Beam	Tube Diameter	Tube Gauge	Person Capacity	Capacity Weight	Dry Weight	Fuel Capacity	Max HP w/ Third Tube	Max HP
20	20' 10"	102"	25"	0.090	10	1,410 lbs	1,850 lbs	20 Gal	200 HP	125 HP
22	22' 10"	102"	25"	0.090	11	1,500 lbs	2,061 lbs	30 Gal	250 HP	150 HP
Sport 23 SB	23' 8"	102"	25"	0.090	12	1,640 lbs	2,380 lbs	38 Gal	250 HP	250 HP





## ECLIPSE SBX

Starting at  
**\$495**  
 Per Month OAC

Boat	Price	Mercury
Eclipse RL DH		
23	\$61,250	60 CT EFI
25	\$63,295	60 CT EFI
Eclipse SSB		
23	\$62,975	60 CT EFI
25	\$64,995	60 CT EFI
Eclipse SBX		
23	\$65,475	60 CT EFI
25	\$70,895	60 CT EFI



## ECLIPSE LR DH



## ECLIPSE SSB

KARAVAN TRAILER	Pricing
Tandem Axle Trailer	\$7,098
Tri Toon Trailer Kit	\$325

### STANDARD FEATURES

- High Back Helm Chairs
- Table w/cupholders
- Kicker KMC Stereo w/ Bluetooth & Speakers
- 10' Bimini Top
- Changing Room
- Hydraulic Steering
- Extended Rear Deck
- Docking Lights
- Gauge Package
- Performance Package

### ECLIPSE LR DH FEATURES

- \* (2) High Back Helm Chairs

Model Specs	Length	Beam	Tube Diameter	Tube Gauge	Person Capacity	Capacity Weight	Dry Weight	Fuel Capacity	Max HP w/ Third Tube	Max HP
23	24' 8"	102"	25"	0.090	12	1,695 lbs	2,750 lbs	60 Gal	300 HP	300 HP
25	26' 8"	102"	25"	0.090	14	1,975 lbs	3,250 lbs	60 Gal	350 HP	350 HP



Starting at  
**\$740**  
 Per Month OAC

Boat	Price	Mercury
23 LR DH	\$94,795	150 XL
25 LR DH	\$97,950	150 XL

KARAVAN TRAILER	Pricing
Tandem Axle Trailer w/ Tritoon Kit	\$7,230

### STANDARD FEATURES

- High Back Helm Chair that Slides, Swivels & Reclines
- Table with Cup Holders
- Power Canopy
- Playpen Cover
- Lounge Arm Change Room
- JL MM50 Stereo w/ Bluetooth
- Console Storage
- Extended Rear Deck
- Rear Entry Gate
- Platform Lighting
- Lighted Cupholders
- Gauge Package
- Hydraulic Steering
- PR25 X-treme Performance Package w/ 60 Gallon gas tank
- Ski Tow Bar

# CALAIS



**CALAIS 25 LR DC**

Model Specs	Length	Beam	Tube Diameter	Person Capacity	Capacity Weight	Dry Weight	Fuel Capacity	Max HP
23	24' 8"	102"	25"	12	1,695 lbs	2,750 lbs	60 Gal	300 HP
25	26' 8"	102"	25"	14	1,975 lbs	3,250 lbs	60 Gal	400 HP



# STARCRAFT

Starcraft has led the boating industry for 120 years with an unmatched heritage of quality, innovation, and craftsmanship. Their commitment to excellence means that every Starcraft boat is built without compromise. Every interior detail is designed to enhance your comfort, and every mechanical detail is engineered for unsurpassed durability and reliability.

Each Starcraft is still built largely by hand, blending cutting-edge technology with timeless craftsmanship to achieve a level of customer satisfaction that is unmatched in the industry. It's a difference you can see, with their impeccable fit and finishes, and it's a difference you can feel when you're out on the water.



## The Industry's Best Warranty

- Limited Lifetime Warranty On Hull And Structure
- 6-Year Warranty On All Components, Carpet, Upholstery\*
- Covers All Parts And Labor
- Transferable To Second Owner

\* Some Exceptions Apply



Starting at  
**\$335**  
 Per Month OAC

Boat	Price	Mercury
171 OB	\$40,995	115 CT EFI
191 OB	\$45,295	115 CT EFI
190 OB DH	\$46,825	115 CT EFI

**STANDARD FEATURES**

- Premium Helm Seat w/ Flip-Up Bolster
- Bimini Top & Storage Boot
- AM/FM Stereo w/ Bluetooth & (4) Speakers
- Cupholders
- In-Floor Ski Storage
- Gauge Package
- Power Point
- Stainless Steel Bow Rails
- Bow Platform w/ Boarding Ladder
- (4) Mooring Cleats
- Automatic Bilge Pump
- Courtesy Lights
- Bow & Stern Eva Soft Touch Traction Mat
- Trailmaster Tandem Axle Trailer

**SVX 171 OB FEATURES**

- Tilt Steering

**SVX 191 OB & 190 OB DH FEATURES**

- Hydraulic Steering



**SVX 171 OB**



**SVX 190 OB DH**



**SVX 191 OB**

Model Specs	Length	Beam	Transom Height	Transom Width	Deadrise	Person Capacity	Capacity Weight	Dry Weight	Fuel Capacity	Max HP
171 OB	17' 4"	102"	20"	93"	14°	10	1,400 lbs	2,126 lbs	19 Gal	115 HP
191 OB	18' 11"	102"	20"	93"	14°	12	1,600 lbs	2,378 lbs	45 Gal	150 HP
190 OB DC	18' 11"	102"	25"	93"	14°	12	1,600 lbs	2,378 lbs	45 Gal	150 HP





**SVX 211 OB**



Starting at  
**\$495**  
 Per Month OAC

Boat	Price	Mercury
210 OB	<b>\$61,250</b>	115 CT EFI
211 OB	<b>\$61,250</b>	115 CT EFI
231 OB	<b>\$62,595</b>	115 CT EFI



**SVX 231 OB**

**STANDARD FEATURES**

- Premium Helm Seat w/ Flip-Up Bolster
- Bimini Top & Storage Boot
- AM/FM Stereo w/ Bluetooth & (4) Speakers
- Cupholders
- Hydraulic Steering
- Gauge Package
- Stainless Steel Bow Rails
- Bow Platform w/ Boarding Ladder
- (4) Mooring Cleats
- Courtesy Lights
- In-Floor Ski Storage
- Automatic Bilge Pump
- Bow & Stern EvA Soft Touch Traction Mat
- Trailmaster Tandem Axle Trailer

Model Specs	Length	Beam	Transom Height	Transom Width	Deadrise	Person Capacity	Capacity Weight	Dry Weight	Fuel Capacity	Max HP
210 OB	21' 5"	102"	25"	93"	14°	12	1,800 lbs	3,378 lbs	44 Gal	250 HP
211 OB	20' 9"	102"	25"	93"	14°	14	2,650 lbs	2,685 lbs	45 Gal	200 HP
231 OB	22' 8"	102"	25"	93"	14°	14	2,950 lbs	3,263 lbs	60 Gal	300 HP



Whether you're adding electronics, re-powering your boat, installing a radio, downriggers, seats, trolling systems, or adjusting a trailer, our rigging shop is prepared to accommodate just about any boat rigging need you might have.

From boat repair to custom boxes and modifications, you can rely on the experience of Stevens Marine's skilled fabricators to transform each and every project into a beautifully finished, functional form that is built battleship tough.

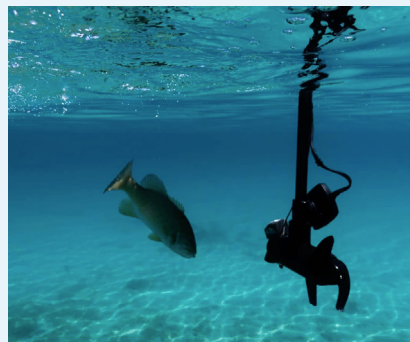
We carry motors, trailer parts, outboard accessories, fish finders, crab pullers, electrical, safety, and maintenance products - everything you need to service, preserve, or upgrade your boat. If we don't have it, we can get it.

### Brands That We Carry

Fish Fighter, Humminbird, Minn Kota, Lowrance, Garmin, Scotty, Folbe, and more!



Fish Fighter  
Seat Backpack



Ultrax Quest



Ace Line Hauler



Lowrance Active Target 2

### Our Services

Our highly trained marine technicians are dedicated to maintaining and servicing your boat, Mercury outboard, Mercury jet drive, Mercruiser sterndrive, Volvo sterndrive or trailer.

- Diagnostics
- Boat Maintenance and Repairs
- Engine Maintenance and Repairs
- Electronics Installation
- Fabrication
- Rigging
- Repowers
- Winterization

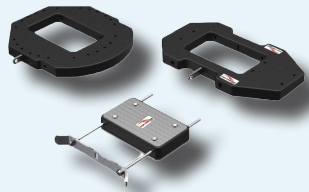




Fish Fighter Products is on a mission to innovate and create the best line of "big fish" fishing products in the industry from imaginative fishing gear to innovative accessories. They are the best at what they do because they are dedicated heavy water anglers. When they see a need, they create the finest and toughest products to meet that need. Designed and built for hardcore heavy water fishermen and women in the pursuit of big fish.

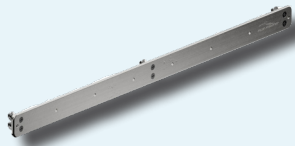


### Quick Mount™



Model	Price
Puck and Pin	\$97
Anchor Nest Mount	\$122
Minn Kota Mount	\$137

### SRS™ Flat Surface Mount



Size	Price
24"	\$67
36"	\$80
72"	\$134

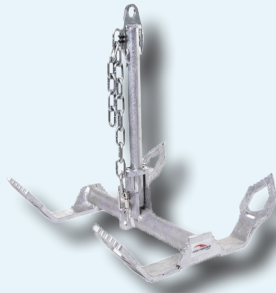
### Bow Mount Anchor Nest



Model	Price
Extreme Duty XD	\$372

Fish Fighter is known for its Sliding Rail System (SRS), a group of products that will allow you to easily adjust the location of your rod holders, tackle trays and other accessories. Customize your boat to fit your needs!

### Breakaway Anchors River Edition



Size	Price
26 lb	\$220
32 lb	\$260
Folding	
Size	Price
26 lb	\$247
32 lb	\$288

### Sliders



Model	Price
Universal Rail	\$51
Universal Tray	\$51
Alumaweld	\$60



Model	Price
Rail System Sliding Block	\$57



Model	Price
Quick Release™ System Base	\$41

### QRS Rod Risers



Size	Price
4"	\$80
8"	\$93
14"	\$120
24"	\$160

Size	Price
4" x 8"	\$120
7" x 8"	\$120
8" x 14"	\$134
14" x 7"	\$134
14" x 12"	\$133



Model	Price
Floating Anchor Rope Bag	\$90



Model	Price
Kwik-Pull™ Anchor Retrieval	\$115





# FISH FIGHTER™ Products

### Sportsman's Utility Tray



Size	Price
4" x 16"	<b>\$68</b>
5.5" x 16"	<b>\$75</b>
8" x 16"	<b>\$93</b>

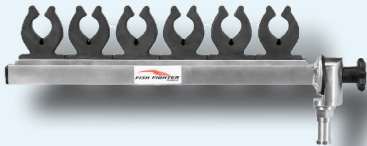
### Relentless Series™ Tackle Trays / Sinker Trays



Model	Size	Price
Sinker Tray	4" x 16"	<b>\$109</b>
Angled Sinker Tray		<b>\$90</b>

Sizers sold separately

Model	Size	Price
Tackle Tray	4" x 16"	<b>\$137</b>
Angled Tackle Tray		<b>\$123</b>

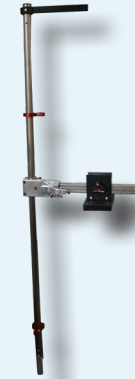


Model	Price
S&C Rod Rack	<b>\$130</b>

### Wall Mount Rod Rack



Model	Price
6 Rod Holder	<b>\$43</b>
Offshore	<b>\$50</b>



Model	Price
Live Sonar Transducer	<b>\$580</b>
Mini Puck & Pin	<b>\$70</b>



Model	Price
Bait Tray w/ Plug Cutter	<b>\$192</b>
Knife Storage Tray	<b>\$35</b>



### Fillet Table

Model	Price
Small	<b>\$267</b>
Large	<b>\$307</b>



### Fillet Away

Fish Mat	<b>\$35</b>
----------	-------------



Model	Price
Boat Seat Backpack	<b>\$130</b>
Seat Swivel Base	<b>\$153</b>



Tender	
Model	Price
Rod	<b>\$63</b>
Tackle	<b>\$120</b>



Net Holder Mount	
Model	Price
Top	<b>\$73</b>
Universal	<b>\$73</b>





Folbe Crab Davit



Discovery Bay Power Hauler



Ace Pro Line Hauler

Crab Davits		
Brand	Model	Price
Folbe	Crab Davit	<b>\$400</b>
Discovery Bay	Power Hauler HD923 Power Reel	<b>\$1,595</b>
Ace	Pro Line Hauler	<b>\$799</b>



### Columbia River Anchor System

Brand	Model	Price
EZ Marine	Deluxe System 27 lb	<b>\$499</b>



### Crabbing Accessories

Brand	Model	Price
Haxton's	Crab Apron	<b>\$286</b>

(Apron only)



Cannon Optimum

### Power Downriggers

Brand	Model	Price
Cannon	Magnum 5	<b>\$550</b>
Cannon	Optimum	<b>\$1,650</b>
Scotty	Depth Power 1101	<b>\$889</b>
Scotty	Depth Power 1106	<b>\$980</b>



Aqua Jet

Model	Price
5.2 Washdown System Kits	<b>\$456</b>



Anchor Nest

### Anchor Nests

Brand	Model	Price
Leelock	Can System	<b>\$395</b>
Leelock	Anchor Nest	<b>\$280</b>
Miller Marine	Anchor Locker	<b>\$260</b>
Anchor Caddie	Pro Anchor	<b>\$350</b>



### Burnewiin

Model	Price
CB5420 Cutting Board 42"	<b>\$675</b>



## POPULAR PRODUCTS



Burnewiin

Burnewiin	
Model	Price
RH3740 Rod Holder	<b>\$70</b>
RH6650 Rod Holder	<b>\$145</b>
GM400 Mount	<b>\$55</b>
GM650 Mount	<b>\$165</b>
FC5120 Fender Cleat Pair	<b>\$55</b>
KN5690 Ocean Knife 7"	<b>\$130</b>



Scotty

Scotty	
Model	Price
Power Lock	<b>\$33</b>
Striker	<b>\$70</b>



GM650 Mount



D Size Short

RAM Electronics Mounts	
Model	Price
Universal B Short	<b>\$52</b>
Universal C Short	<b>\$75</b>
Universal D Short	<b>\$142</b>
Large D Long	<b>\$174</b>



Folbe

Folbe	
Model	Price
Advantage JR	<b>\$55</b>
Advantage	<b>\$58</b>



Model	Price
Prop Saver	<b>\$145+</b>



Blackhawk Lights		
Model	Size	Price
Led Lights	12"	<b>\$32</b>
Led Lights	21"	<b>\$47</b>
Led Lights	41"	<b>\$63</b>





**FRESHWATER  
TROLLING MOTOR  
BOW MOUNT**

TERROVA BUILT-IN SONAR/NO FOOT PEDAL		
60"	24V 80lb	<b>\$1,999.99</b>

**BOW MOUNT**



**RIPTIDE INSTINCT Quest 90/115**

Size	Voltage	Price
60"	24V/36V	<b>\$4,399.99</b>
72"	24V/36V	<b>\$4,699.99</b>
87"	24V/36V	<b>\$5,449.99</b>
100"	24V/36V	<b>\$6,099.99</b>



**SALTWATER  
TROLLING MOTOR  
BOW MOUNT**

**RIPTIDE  
TERROVA**

Size	Voltage	Price
60"	24V 80 lb	<b>\$2,799.99</b>
60"	36V 112 lb	<b>\$2,999.99</b>
72"	24V 80 lb	<b>\$3,099.99</b>
72"	36V 112 lb	<b>\$3,299.99</b>

Also available in Quest.  
Ask us about them!



**TRANSOM MOUNT**

**RIPTIDE TRANSOM**

Size	Voltage	Price
36"	12V 45 lb	<b>\$399.99</b>
36"	12V 55 lb	<b>\$549.99</b>
42"	12V 55 lb	<b>\$569.99</b>
42"	24V 80 lb	<b>\$949.99</b>
52"	36V 112 lb	<b>\$1,199.99</b>



**BATTERY CHARGERS**



**PRECISION CHARGERS**

Model	Bank	Amps	Price
MK110PCL	1	10	<b>\$159.99</b>
MK220PCL	2	10	<b>\$319.99</b>
MK230PCL	2	15	<b>\$369.99</b>
MK330PCL	3	10	<b>\$399.99</b>
MK345PCL	3	15	<b>\$499.99</b>
MK440PCL	4	10	<b>\$529.99</b>
MK460PCL	4	15	<b>\$599.99</b>
MK500PCL	5	10	<b>\$699.99</b>



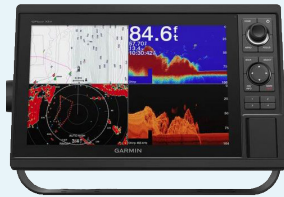
# GARMIN®

Harness the power of Garmin at your helm with easy-to-use chartplotters and fishfinders. Get navigation and sonar technology with an intuitive interface that combines advanced technology and connectivity to meet the needs of any captain.



## GPSMAP w/GT51M-TM Transducer

Model	Size	Price
8610xsv	10"	\$3,430
8612xsv	12"	\$4,730
8616xsv	16"	\$6,730



## GPSMAP w/GT52HW-TM Transducer

Model	Size	Price
1042xsv	10"	\$1,900
1242xsv	12"	\$2,600



## ECHOMAP UHD 2 w/ Transducer

Model	Size	Price
54cv	5"	\$449
74sv	7"	\$949
94sv	9"	\$1,199



## STRIKER™ 4 w/ Dual-Beam Transducer

Price
\$139.99



## GMR Radome

Model	Size	Price
18 HD3	18"	\$1,799
Fantom	18"	\$2,199
Fantom 18x 50w	18"	\$2,299



## GPS 24xd Receiver and Antenna Requires NMEA KIT

Price
\$315
NEMA Starter Kit
\$105



## VHF Marine Radio

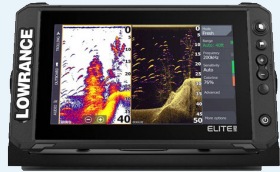
Model	Price
115	\$399
215	\$499



## LIVE SCOPE W/ GLS 10™ & LVS34 TRANSDUCER W/ GLS 10™ & LVS62 TRANSDUCER\*

Model	Price
Plus System	\$1,699
XR*	\$2,999





Elite FS™  
w/ACTIVE IMAGING 3-in-1

7"	\$899
9"	\$999
10"	\$1,799
12"	\$2,299



HELIX 5 CHIRP  
DI GPS G3 **\$319**



HDS Pro  
w/ACTIVE IMAGING HD

9"	\$2,199
10"	\$2,799
16"	\$4,999



HELIX CHIRP  
MEGA SI GPS G4N  
w/transducer

Model	Price
7	<b>\$950</b>



HALO 20 RADAR  
**\$1,899**



XPLORE

Model	Price
9 CMSI	<b>\$1,449</b>
10 CMSI	<b>\$2,199</b>
12 CMSI	<b>\$2,699</b>



LINK VHF RADIO

Link-6S	<b>\$276</b>
Link-9S	<b>\$554</b>



Active Target 2  
(Module + Transducer  
+ Mounts)  
**\$1,649**



MEGA Live 2  
Forward-Facing  
Sonar **\$1,499**



# TRAILERS



## FEATURES

- Galvanized to resist rust and increase longevity
- Bunks provide optimum bottom support
- Properly designed to balance the load for easy towing
- Infinitely adjustable
- Fits boats precisely for easy loading and launching
- Oil bath hubs for easy and proper bearing lubrication

# KARAVAN Pontoon Trailers

## FEATURES

- Swaycontrol™ Engineering
- Adjustable axle for optimal tongue weight
- Attractive and durable
- Winch stand ladder
- High reliability shortfree™ lighting system
- Sure-lube wheel bearing grease system
- Coated self-coiling safety cables
- Tongue jack included
- PR vertical load guides (14'-22')
- 2 PR vertical load guides (25'+)



# ROGUE TRAILERS

## FEATURES

- All-welded, galvanized steel channel construction
- Durawood™ bunks and UHMW side load guides make loading & launching easy
- Swing Tongue included (21' & under)
- Trailer Buddy™ axles assure best ride and towing
- Torque Flex axles for smooth ride
- Resists rust and corrosion
- Radial tires
- LED lights



EZ LOADER MODEL	Boat Length	Capacity	Tire Size	No Brakes	Brakes Axle 1	Brakes Axle 2
<b>Single Axle</b>						
EZTB14	14'	1,225 LBS	12"	\$1,600	-	-
EZB 12-14	12'-14'	1,200 LBS	12"	\$1,890	-	-
EZNB 14-17	14'-17'	1,250 LBS	13"	\$1,989	-	-
EZB 14-18	14'-18'	2,300 LBS	13"	\$2,925	\$3,710	-
EZB 16-20	16'-20'	2,300 LBS	13"	\$3,305	\$4,090	-
EZB 16-20	16'-19'	2,350 LBS	14"	\$3,229	\$4,014	-
EZB 16-20	16'-19'	2,800 LBS	14"	\$3,229	\$4,014	-
EZB 19-22	19'-22'	3,100 LBS	14"	\$3,545	\$4,330	-
<b>Tandem Axle</b>						
TEZB 17-20	17'-20'	4,000 LBS	14"	\$4,805	\$5,590	\$6,149
TEZB 23-25	23'-25'	5,800 LBS	14"	\$7,685	\$8,470	\$9,029
TEZB 23-25	23'-25'	7,500 LBS	15"	\$8,240	\$9,025	\$9,584
KARAVAN MODEL	Boat Length	Capacity	Tire Size	Price	Tri Toon Kit	
<b>Single Axle</b>						
KDP-1415	14'-15'	2,200 LBS	13"	\$3,759	-	-
KDP-1618	16'-18'	2,700 LBS	13"	\$4,369	-	-
KDP-1822	18'-22'	2,700 LBS	13"	\$4,145	-	\$300
<b>Tandem Axle</b>						
KDPT-1822	18'-22'	4,500 LBS	13"	\$6,245	-	\$300
KDPT-2225	22'-25'	4,500 LBS	13"	\$7,015	-	\$300
KDPT-2628	26'-28'	5,000 LBS	13"	\$7,355	-	\$525
KDPT-2528	25'-28'	6,500 LBS	13"	\$10,869	-	\$525
ROGUE MODEL	Boat Length	Capacity	Tire Size	Price	Brakes 1	Brakes 2
<b>Single Axle</b>						
RS18-66-2300	18'	2,300 LBS	14"	\$6,645	\$7,919	-
RS18-72-2800	18'	2,800 LBS	15"	\$6,645	\$7,919	-
RS-20-66-2800	20'	2,800 LBS	15"	\$6,750	\$8,025	-
RS-20-72-2800	20'	2,800 LBS	15"	\$6,995	\$8,270	-
RS-20-72-3700	20'	3,700 LBS	15"	\$7,200	\$8,475	-
<b>Tandem Axle</b>						
RT-20-72-4000	20'	4,000 LBS	14"	\$8,159	\$9,435	\$9,895
RT-20-82-4000	20'	4,000 LBS	14"	\$8,635	\$9,910	\$10,370
RT-21-82-4000	21'	4,000 LBS	14"	\$8,885	\$10,160	\$10,620
RT-22-72-4000	22'	4,000 LBS	14"	\$8,875	\$10,150	\$10,610
RT-22-82-4000	22'	4,000 LBS	14"	\$9,360	\$10,635	\$11,095
RT-22-82-4000 HD	22'	4,000 LBS	14"	\$12,485	\$13,700	\$14,220
RT-23-82-4000	23'	4,000 LBS	14"	\$9,525	\$10,800	\$11,260
RT-24-82-4000	24'	4,000 LBS	14"	\$10,345	\$11,620	\$12,080
RT-24-82-5500 HD	24'	5,500 LBS	15"	\$13,710	-	INC
RT-25-82-4000	25'	4,000 LBS	14"	\$10,575	\$11,850	\$12,310
RT-26-82-5500C HD	26'	5,500 LBS	15"	\$14,655	-	INC





Reliability, value, power, fuel efficiency, ease-of-operation, clean running, resale... Mercury wins and Stevens Marine is proud to offer the full line of Mercury outboards. Stevens Marine is one of the nation's leading Mercury dealers offering volume pricing, the region's best selection, expert service, and a complete parts and accessories department. You can depend on Stevens Marine and Mercury Marine to keep you running strong, trip-after-trip.

**EASIEST TO DRIVE**

Mercury's innovative tiller handle sets a new standard for control- delivering features, functions and craftsmanship never seen before. Available on 15 hp- 30hp FourStroke outboards.

**MORE THRUST**

ProKicker outboards feature a deeper gearcase and a four-blade, high-thrust propeller with matching gear ratio – the perfect setup for trolling and precise control in all conditions.

**MORE POWER**

Mercury outboard engines are light and compact, but deliver the power serious boaters demand.

**Meet Mercury's V10 Outboards**

Providing legendary power and reliability, with superior refinement and control, the all new 350 and 400 hp Verado engines deliver extraordinary power and capabilities so you can confidently explore beyond the horizon. Exceptionally smooth, quiet and refined, Verado outboards transform your boating experience.



**Mercury Avator: A New Way to Go Boldly**

The Mercury Avator electric outboard concept explores boating at its essence. Quiet, smooth, easy to operate with zero direct emissions and minimal maintenance.



Upgrade your engine at Stevens Marine! Your boat still has a lot of memories to make. Give it the power it needs to continue propelling you on your adventures with a new Mercury outboard.

**Outboard Motors Key Code**

- |                                     |                                       |
|-------------------------------------|---------------------------------------|
| <b>A</b> Alternator                 | <b>M</b> Manual Start                 |
| <b>AT</b> Advanced Tiller           | <b>P</b> Propane                      |
| <b>DTS</b> Digital Throttle & Shift | <b>SP</b> Sail Power                  |
| <b>C</b> Counter Rotation           | <b>TM</b> Torque Master               |
| <b>CT</b> Command Thrust            | <b>PT</b> Power Trim                  |
| <b>E</b> Electric Start             | <b>PK</b> Pro Kicker                  |
| <b>GA</b> Gas Assist                | <b>L</b> Long Shaft 20"               |
| <b>H</b> Tiller Handle              | <b>XL</b> Extra Long Shaft 25"        |
| <b>RC</b> Remote Control            | <b>XXL</b> Extra Extra Long Shaft 30" |



## 4 STROKE

2.5 MH	\$965	15 MRC	\$3,000
3.5 MH	\$1,125	15 MH	\$3,025
3.5 MLH	\$1,150	15 MLH	\$3,025
4 MH	\$1,490	15 E	\$3,350
4 MLH	\$1,510	15 EH	\$3,395
5 MH	\$1,685	15 ELH	\$3,410
5 MXLH	\$1,690	15 ELPT	\$3,645
5 MLHA SP	\$1,705	15 ELPT PK	\$3,895
5 MH P	\$1,795	15 EXLPTPK	\$4,025
5 MLH P	\$1,815	15 ELHPT PK	\$3,930
5 MLHA SP P	\$1,865	15 EXLHPT PK	\$4,050
5 MXLHA SP P	\$1,885	20 MRC	\$3,495
6 MH	\$1,870	20 MH	\$3,525
6 MLH	\$1,890	20 MLH	\$3,555
8 MH EFI	\$2,485	20 EH	\$3,885
8 MLH EFI	\$2,510	20 E	\$3,855
8 EH EFI	\$2,830	20 ELH	\$3,920
8 ELH EFI	\$2,840	20 EL	\$3,895
9.9 MLH EFI	\$2,800	20 EPT	\$4,180
9.9 ELHPT PK EFI	\$3,560	20 ELHPT	\$4,265
9.9 MRC EFI	\$2,775	20 ELPT	\$4,230
9.9 MH EFI	\$2,780	25 MH	\$4,045
9.9 MLH EFI	\$2,800	25 MLH	\$4,065
9.9 EH EFI	\$3,120	25 EH	\$4,575
9.9 EL EFI	\$3,125	25 EL	\$4,560
9.9 ELH EFI	\$3,135	25 EPT	\$5,015
9.9 EPT EFI	\$3,465	25 ELHPT	\$5,165
9.9 MLH CT EFI	\$2,940	25 ELPT	\$5,090
9.9 MXLH CT EFI	\$3,025	25 ELPT PK	\$5,340
9.9 ELH CT EFI	\$3,205	25 EXLPT PK	\$5,465
9.9 EXLH CT EFI	\$3,290	30 MH GA	\$4,810
9.9 ELPT CT PK EFI	\$3,550	30 MLH GA	\$4,825
9.9 EXLPT CT PK EFI	\$3,625	30 EL GA	\$5,245
9.9 ELHPT CT PK EFI	\$3,560	30 ELH GA	\$5,375
9.9 EXLHPT CT PK EFI	\$3,635	30 ELPT	\$5,810
		30 ELHPT	\$5,930
		40 EPT	\$6,625
		40 ELPT	\$6,680
		40 ELHPT AT	\$7,195



40 ELPT CT	\$7,185
50 ELPT	\$7,440
50 ELHPT AT	\$7,780
50 ELPT CT	\$7,615
50 ELHPT CT AT	\$8,195
60 ELPT	\$7,940
60 ELHPT AT	\$8,385
60 ELPT CT	\$8,005
60 EXLPT CT	\$8,675
60 ELHPT CT AT	\$8,795
75 ELPT	\$9,790
90 ELPT	\$10,175
90 EXLPT	\$10,210
90 ELPT CT	\$10,505
90 EXLPT CT	\$10,545
115 ELPT	\$11,005
115 EXLPT	\$11,035
115 ELPT CT	\$11,330
115 EXLPT CT	\$11,365
115 ECXLPT CT	\$11,365
150 L	\$14,430
150 XL	\$14,580
150 CXL	\$15,080
175 L DTS	\$18,845
175 XL DTS	\$19,095
175 CXL DTS	\$19,595
200 L	\$18,880
200 XL	\$19,130
200 CXL	\$19,630
200 L DTS	\$19,390
200 XL DTS	\$19,640
200 CXL DTS	\$20,140
225 L	\$21,055
225 XL	\$21,305
225 CXL	\$21,805
225 XXL	\$21,555
225 L DTS	\$21,565
225 XL DTS	\$22,815
225 CXL DTS	\$22,315

## VERADO

225 XXL DTS	\$22,065
225 CXXL DTS	\$22,565
250 L V8	\$24,395
250 XL V8	\$24,645
250 CXL V8	\$25,145
250 XXL V8	\$24,895
250 CXXL V8	\$25,395
250 L DTS V8	\$25,060
250 XL DTS V8	\$25,310
250 CXL DTS V8	\$25,810
250 XXL DTS V8	\$25,560
250 CXXL DTS V8	\$26,060
300 L V8	\$26,255
300 XL V8	\$26,505
300 CXL V8	\$27,005
300 L DTS V8	\$27,045
300 XL DTS V8	\$27,295
300 CXL DTS V8	\$27,795
250 L V8	\$26,890
250 XL V8	\$27,140
250 CXL V8	\$27,640
250 XXL V8	\$27,390
250 CXXL V8	\$27,890
300 L V8	\$28,780
300 CL V8	\$29,280
300 XL V8	\$29,030
300 CXL V8	\$29,530
300 XXL V8	\$29,280
300 CXXL V8	\$29,780
350 L V10	\$33,130
350 CL V10	\$33,630
350 XL V10	\$33,380
350 CXL V10	\$33,880
350 XXL V10	\$33,630
350 CXXL V10	\$34,130
400 L V10	\$37,105
400 CL V10	\$37,605

## PRO XS

400 XL V10	\$37,355
400 CXL V10	\$37,855
400 XXL V10	\$37,605
400 CXXL V10	\$38,105
115 ELPT	\$11,595
115 EXLPT	\$11,630
115 ELPT CT	\$11,930
115 EXLPT CT	\$11,960
150 L	\$14,990
150 XL	\$15,140
175 L	\$18,680
175 XL	\$18,930
200 L TM	\$20,405
200 L	\$20,405
200 XL	\$20,655
225 L TM	\$22,735
225 XL	\$23,005
250 L TM	\$24,135
250 XL	\$25,020
300 L TM	\$28,095
300 XL	\$28,355



HEATED  
TILLER  
GRIP\*  
\$330

## JETS (REMOTE)

25 ELPT 4S	\$6,095
35 ELPT	\$6,620
60 ELPT 4S (40 Jet)	\$7,300
90 ELPT 4S (65 Jet)	\$11,154
115 ELPT 4S(80 Jet)	\$12,589
150 L 4S(105 Jet)	\$16,014
150 XL 4S	\$16,164
200 L 4S	\$22,216
200 XL 4S	\$22,466
225L 4S	\$24,431
225 XL 4S	\$24,681
250 L 4S	\$27,771
250 XL 4S	\$28,021
300 L 4S	\$30,991
300 XL 4S	\$31,281

## JETS (TILLER)

25 ELH GA 4S	\$6,125
60 ELPT 4S (40 Jet)	\$7,985
90 ELPT 4S (65 Jet)	\$13,269
115 ELPT 4S (80 Jet)	\$14,704
150 L 4S (105 Jet)	\$18,429
150 XL 4S	\$18,579
200 L 4S	\$24,631
200 XL 4S	\$24,881
225 L 4S	\$26,846
225 XL 4S	\$27,096
250 L 4S	\$30,186
250 XL 4S	\$30,436
300 L 4S	\$33,406
300 XL 4S	\$33,696



## AVATOR

7.5 ESH	\$3,250
7.5 ESRC	\$3,230
7.5 ELH	\$3,280
7.5 ELRC	\$3,260
7.5 EXLH	\$3,310
7.5 EXLRC	\$3,290
20 ESH	\$3,600
20 ESRC	\$3,580
20 ELH	\$3,630
20 ELRC	\$3,610
20 EXLRC	\$3,640
35 ESH	\$4,500
35 ESRC	\$4,480
35 ELH	\$4,530
35 ELRC	\$4,510
35 EXLH	\$4,560
35 EXLRC	\$4,540





Visit our website!



VISIT US TODAY!



**Stevens Marine Milwaukie**  
18023 SE Addie Street Milwaukie, OR 97267  
(503) 652-1444  
Fax: (503) 653-5378



**Stevens Marine Tigard**  
9180 SW Burnham Street Tigard, OR 97223  
(503) 620-7023  
Fax: (503) 684-8952



**Apply for  
Financing  
Here**

Check Us Out On Social Media



Tag Us **#STEVENS MARINE**